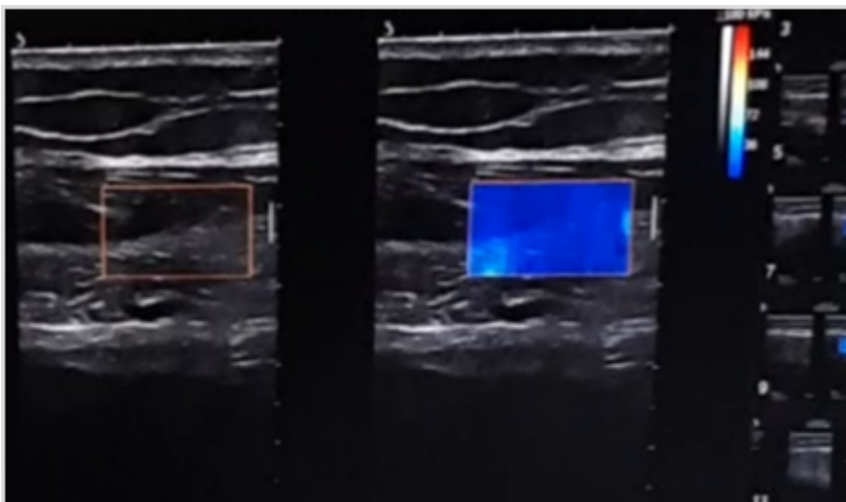


# ERP

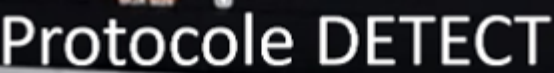
## Équipe de recherche sur le handicap

### DETECT : ULTRASOUND MEASUREMENT OF QUADRICEPS SHORTENING DURING NEUROMUSCULAR ELECTRICAL STIMULATION IN CRITICALLY ILL PATIENTS



#### Descriptif du projet

ICU-Aw is highly prevalent (50%) among critically ill patients. Its diagnosis is usually delayed as it requires patients' awakening and collaboration to provide accurate measurement.



## Date du projet

## Statut du projet

Page 2